

WELCOME

LIPA Community Advisory Board Members

September 17, 2024



Agenda

I. Opening Remarks

Tracey Edwards, LIPA Board Chair

John Rhodes, LIPA Acting CEO

II. National Grid Ventures Operations Update

Jim Flannery, Chief Operating Officer US Northeast

III. PSEG Long Island Operations Update

Dave Lyons, Interim President and Chief Operating Officer

VI. Roundtable Discussion

Opening Remarks



John Rhodes
LIPA, Acting CEO



Tracey Edwards
LIPA, Board Chair

National Grid Ventures Overview

September 17, 2024



nationalgrid
ventures

New York Transco
Building a Clean Energy Future Together



nationalgrid
generation

ProvidenceLNG

CalvertonSolar

NGV US Northeast's diverse portfolio of low carbon and renewable energy businesses across the US Northeast includes traditional power generation, wind, solar, transmission modernization, LNG, and battery storage.

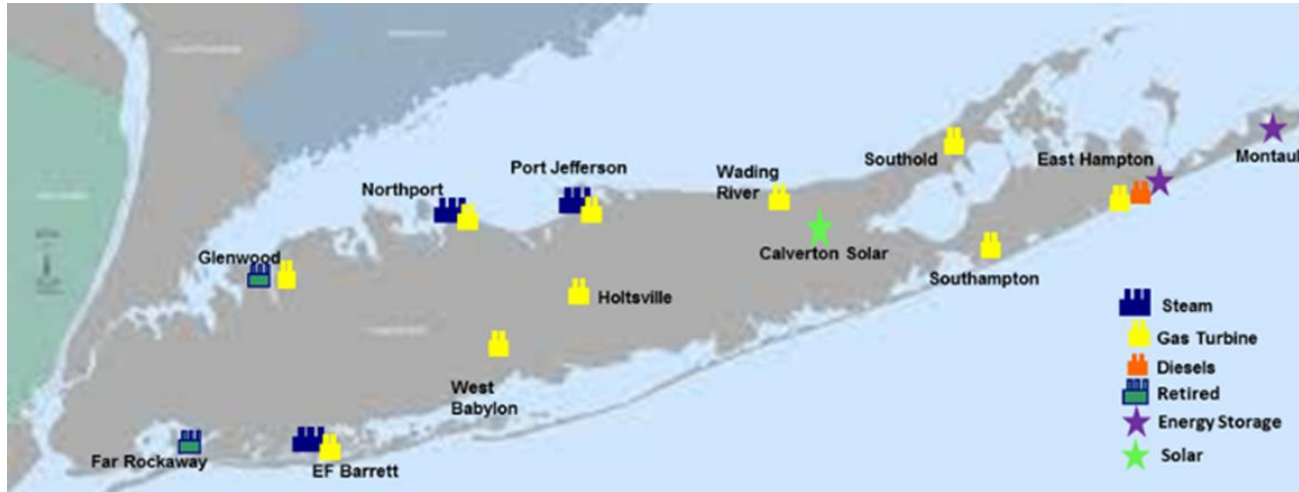


3,800 MW generating capacity across 10 sites

- 8 steam generation units (2,200 MW)
- 42 gas turbine units (1,600 MW)

Providing power to Long Island Power Authority and its Customers

- Provides 65% of Long Island Power Authority's (LIPA) annual capacity
- Generates 30% of LIPA's energy needs



Northport Power Station



- Unit 1: 375 MWG (Initial Operation: July 1967)
- Unit 2: 375 MWG (Initial Operation: June 1968)
- Unit 3: 375 MWG (Initial Operation: July 1972)
- Unit 4: 375 MWG (Initial Operation: December 1977)
- Located adjacent to the Iroquois high pressure gas pipeline
- All Units have natural gas and low sulfur (0.5%) oil firing capabilities
- Dual fuel capability is advantageous



February 2022: Community Offshore Wind acquired Lease Area OCS-A 0539, the largest lease area in the New York Bight.



Our joint venture brings together two global leaders in renewable energy and transmission:

RWE

- #2 offshore wind company globally
- 19 offshore wind projects successfully completed globally
- 6 GW of offshore wind project in development in the US
- 8 GW of onshore wind, solar, and storage in the US
- Net zero goal by 2040

nationalgrid ventures

- Serving 20 million people throughout NY and MA
- More than 11,000 employees in New York
- Growing portfolio of onshore wind, solar, battery storage and transmission modernization projects in the US
- National Grid and its legacy companies have operated in NY for over 125 years



OUR LEASE AREA

Lease Size 125,964 acres/197 sq. mi.

Estimated Capacity 3+ GW

Estimated Homes Served Over 1 million

OUR OFFSHORE WIND PROPOSAL WILL DELIVER CLEAN ENERGY FOR NEW YORK COMMUNITIES



KEY BENEFITS INCLUDE:

Approximately
\$3 billion
in economic activity.



Commitments
to invest up to
\$250 million
in support of workers.



Creating almost
700 new jobs
in the New York area.



Helping to meet
decarbonization goals
and reinforcing the
reliability of the state's
electrical grid.



Generating enough
energy to power
**hundreds
of thousands**
of New York homes.

New York Transco

Building a Clean Energy Future Together

- **NY-based joint venture comprised of:**
 - NGV
 - Con Edison
 - AVANGRID
 - CH Energy Group
- **Leading multiple transmission modernization projects in NY**
 - Strengthening security of supply
 - Improving grid resiliency
 - Facilitating the growth of renewables



PROPEL NY



NY Power Authority

New York Transco
Building a Clean Energy Future Together



WHO: NY Transco– NYPA joint venture

WHAT:

- NYISO Public Policy Transmission Need
- 3 new bi-directional ties connecting Long Island to statewide grid
- 7 new transmission lines
 - Est. 90 miles, 300+ circuit miles
 - 6 new 345kV, 1 new 138kV
- 4 new stations on utility property

WHERE: Parts of Nassau, Suffolk, Queens, Bronx and Westchester Counties

WHY:

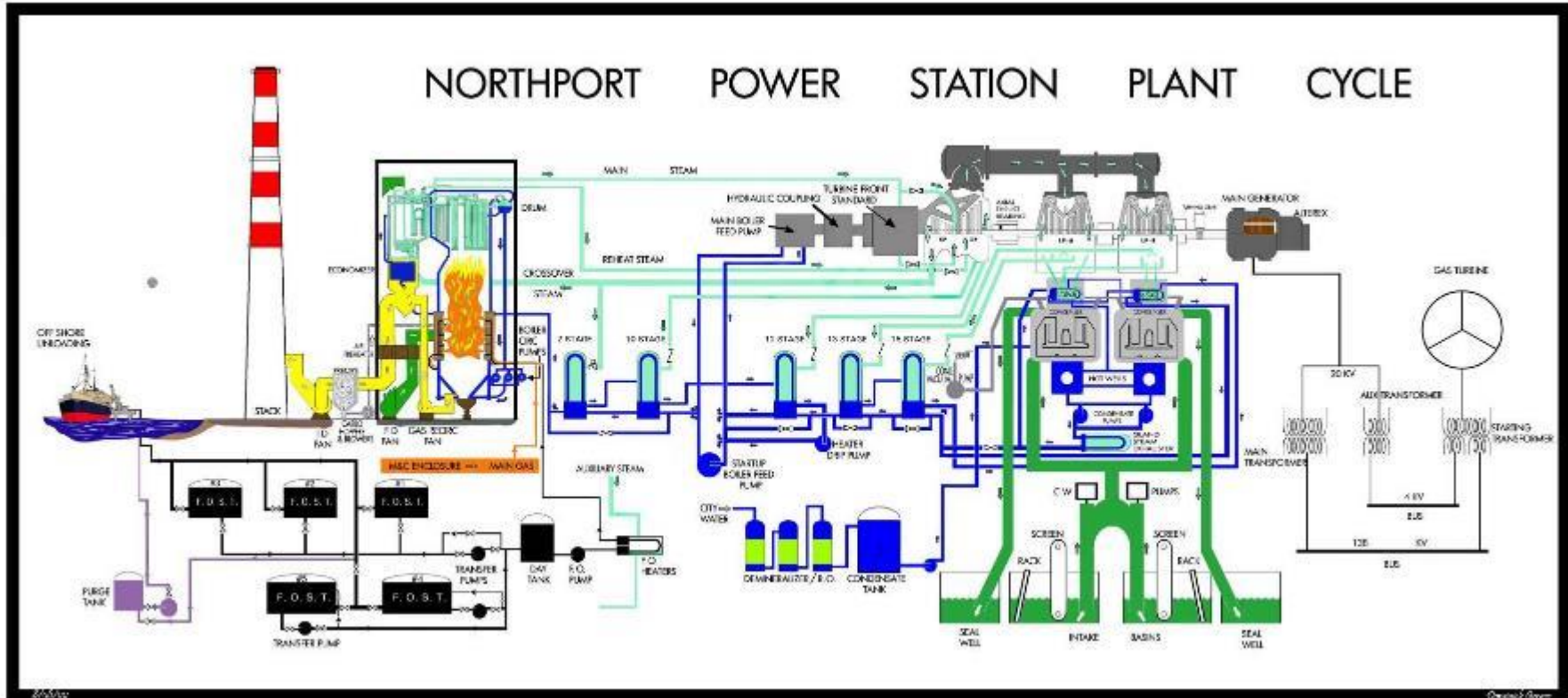
- Resilient & reliable backbone
- Relieve existing congestion
- Flexible 3000 MW OSW interconnection
- Increased control, flexibility & expansion

WHEN:

- Est. 2024–2026 (Article VII in-process)
- Est. mid-2026 Construction Start
- Est. mid-2030 In-Service

Appendix

Northport Power Station





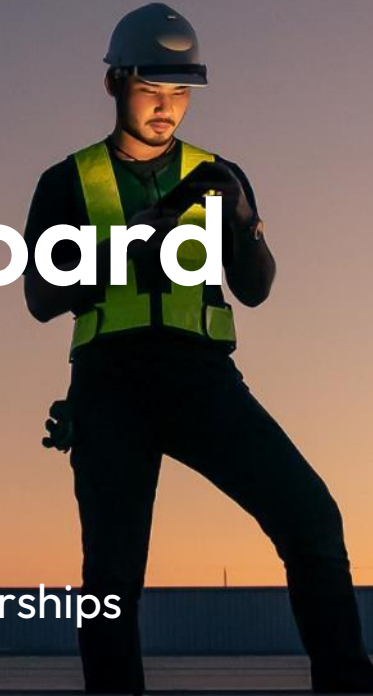
Community Advisory Board

Dave Lyons – Interim President and Chief Operating Officer

Lou Debrino – Vice President, Customer Services

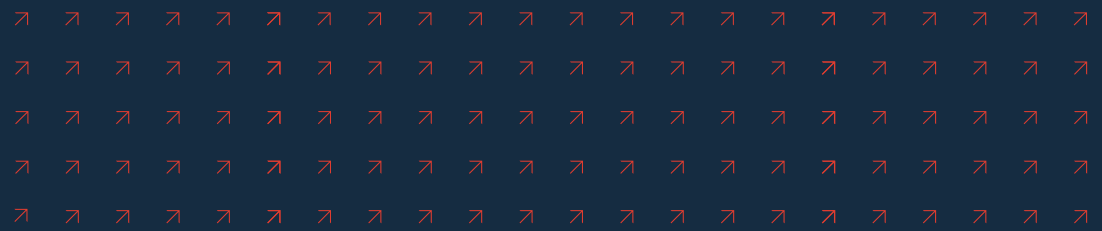
Chris Hahn – Vice President, External Affairs

Veronica Issac – Manager, Customer and Community Partnerships



➤ Agenda

- Economic Development Program
- Community Partnership Program
- Power to Feed Long Island
- Making Strides Against Breast Cancer



Economic Development *Program*



↗ Spend Summary 2018 - 2024 (YTD)

Program	# of Applications	Grants/Incentives Submitted (\$000s)	Grants/Incentives Paid (\$000s)
Main Street Revitalization Program (2018 - 2024 YTD)	105	\$2,054	\$1,451
Vacant Space Revival Program (2018 - 2024)	229	N/A	\$356
Chamber Outdoor Commerce Program (2020-2022)	74	\$289	\$219
Chamber Beautification Program (2021-2022)	52	\$110	\$91
Thrive Program (2023-2024 YTD)	69	\$315	\$239
Total	529	\$2,768	\$2,356

Program	Summary
Main Street Revitalization Program	The Main Street Revitalization Program is designed to encourage economic vitality of a business district and to optimize the use of existing electric infrastructure. This program offers financial incentive awards for projects in a local business district that is expected to improve the economic stability and growth of a municipality.
Vacant Space Program	The Vacant Space Revival Program is designed to encourage occupancy of commercial space in a business district or in an area of existing commercial businesses that has been vacant for a period of one year or more.
Thrive Program	Grants are designed to foster economic viability, vibrancy and support of local businesses while increasing economic growth and business in downtown areas. The program provides funding to the following types of 501(c)(3) or 501(c)(6) organizations: Chamber of Commerce, Business Improvement District, Civic Association or not-for-profit.
Other Economic	<ul style="list-style-type: none"> ↗ Business Attraction/Expansion Rate ↗ Discounts New York State Excelsior ↗ Jobs Program Recharge New York



Community Partnership *Program*

PSEG Long Island is committed to giving back by actively supporting hundreds of local charity events each year. We've supported more than 500 organizations, such as the Making Strides Against Breast Cancer, as well as local food banks such as Island Harvest and Long Island Cares. Our Dedication to public service is why the LIBN awarded us their Corporate Citizenship Award seven times!

2024 YTD Stats

Volunteering Hours:	6,511
Employee Volunteers:	1,777
Events in 2024:	166
Organizations / Community Groups:	110

EDUCATION

- **Safety Sleuth** program educates young students about electrical safety, which reaches over 100 schools and nearly 6,000 students in 2024/205 school year.
- The Mobile Electric Safety Unit has been deployed across Long Island educating students, community members and first responders about electric safety.
- PSEG Long Island supports STEM initiatives such as First Robotics at Hofstra University and the CEWIT Hackathon at SUNY Stony Brook.

FOOD INSECURITY

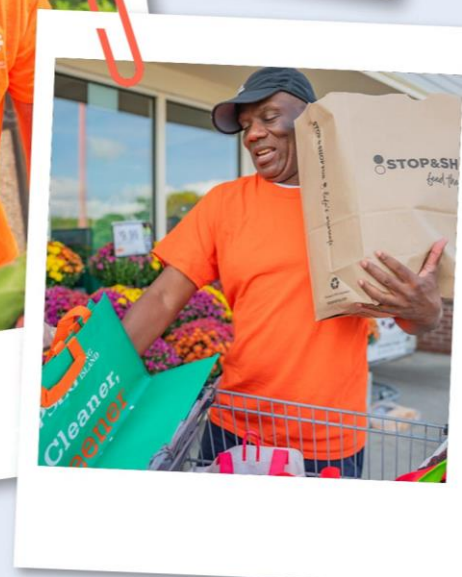
- PSEG Long Island's **Power to Feed Long Island** program supports Island Harvest in raising awareness about food insecurity on Long Island.
- Over the last four years, the Power to Feed program has collected over 130,000 meals for Long Island families.
- PSEG Long Island is also a supporter of **The INN**, Long Island's largest soup kitchen.

ENVIRONMENT

- PSEG Long Island partnered with Nassau and Suffolk counties as well as local civic associations on multiple Earth Day events handing out energy savings trees, energy efficient lightbulbs and information about energy efficiency and solar programs.
- PSEG Long Island's **I Am Empowered** contest reached over 50 school districts where students created their own video public service announcement about energy efficiency and sustainability.

SUPPORTING VETERANS & SENIORS

- PSEG Long Island partnered with Long Island Cares to help support seniors and veterans supporting over 400 households and 700 seniors.
- PSEG Long Island partnered with Long Island Cares and General Needs for multiple Veteran resource fairs distributing healthy meals and personal care items.



Power to Feed Long Island

- Many of our neighbors continue to face food insecurity — particularly during summer when donations to food banks decrease and daily meals stop for thousands of children who depend on them.
- For the fourth year, PSEG Long Island is partnering with Island Harvest and Stop & Shop as part of our Power to Feed campaign.
- From May through September, collection drives will be set up across Long Island, where you can donate non-perishable food and essential care items

Together, we collected...



Healthy Food



Non-Perishable Goods



Household Items



Toiletries



Baby Essentials



Pet Supplies

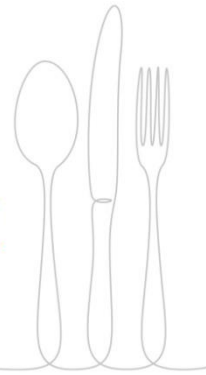
2024 YTD events have collected **20,763 meals***

Power to Feed Long Island initiative has collected more than 100,000 meals for local families

* Does not include September 13th collection



ISLAND HARVEST
MEMBER OF FEEDING AMERICA
Nourishing Long Island's Future



Please stop by any of the locations below between 9AM - 4PM.

- 05/24: Stop & Shop — 702 Hicksville Rd., Massapequa
- 06/08: Stop & Shop — 3126 Jericho Tpk., East Northport
- 06/21: Stop & Shop, 3750 Hempstead Tpk., Levittown
- 07/12: Stop & Shop, 260 Pond Path, South Setauket
- 07/26: Stop & Shop, 95 Old Country Rd., Carle Place
- 08/16: Stop & Shop, 3577 Long Beach Rd, Oceanside
- 09/13: Stop & Shop, 365 Route 109, West Babylon

JOIN THE FIGHT, ONE STEP AT A TIME!

Join us at one of the two Making Strides Against Breast Cancer events!

The Making Strides movement raises lifesaving funds that support breast cancer patients, survivors, thrivers, and caregivers through every step of the journey.

PSEG Long Island is a flagship sponsor of Making Strides Against Breast Cancer walks in Long Island.

We have raised over \$639,000 in support of the cause over the past decade.

PSEG Long Island employees, their family, and friends have participated in the walks by attending in person and raising funds.

REGISTRATION INFORMATION

- Join one of many **PSEG Long Island** teams and complete registration at makingstrideswalk.org/PSEGLI



OCTOBER 5
GRANGABEL PARK
RIVERHEAD

OCTOBER 20
FIELD 5
JONES BEACH



PSEG LONG ISLAND



Thank
you

ROUNDTABLE DISCUSSION

