

Utility Debt Securitization Authority Restructuring Bonds, Series 2015

Utility Tariff/Stranded Cost Bonds Asset-Backed Securities Presale Report

Inside This Report

	Page
Transaction Summary	2
Key Rating Drivers	2
Transaction Comparison	3
Transaction Parties	3
Credit Analysis	3
Cash Flow Analysis	5
Credit Enhancement	7
Transaction and Legal Structure	7
Asset Analysis	10
Counterparty Risk	12
Performance Analytics	13
Rating Sensitivity	14
Origination and Servicing	14
Appendices	18-19

Related Presale Appendix

[Utility Debt Securitization Authority Restructuring Bonds Series 2015 \(September 2015\)](#)

Related Criteria

[Rating Criteria for U.S. Utility Tariff Bonds \(December 2014\)](#)

[Global Structured Finance Rating Criteria \(July 2015\)](#)

[Counterparty Criteria for Structured Finance and Covered Bonds \(May 2014\)](#)

Capital Structure

Class	Expected Rating	Expected Outlook	Amount (\$ Mil.)	CE (%)	Interest Rate (%)	Final Maturity
T-1	AAAsf	Stable	6.01	2.00	TBD	6/15/23
T-2	AAAsf	Stable	6.26	2.00	TBD	12/15/23
T-3	AAAsf	Stable	10.21	2.00	TBD	6/15/24
T-4	AAAsf	Stable	10.47	2.00	TBD	12/15/24
T-5	AAAsf	Stable	5.78	2.00	TBD	6/15/25
T-6	AAAsf	Stable	5.93	2.00	TBD	12/15/25
T-7	AAAsf	Stable	21.36	2.00	TBD	6/15/26
T-8	AAAsf	Stable	21.89	2.00	TBD	12/15/26
T-9	AAAsf	Stable	48.35	2.00	TBD	6/15/27
T-10	AAAsf	Stable	49.55	2.00	TBD	12/15/27
T-11	AAAsf	Stable	7.43	2.00	TBD	12/15/28
T-12	AAAsf	Stable	3.92	2.00	TBD	12/15/29
T-13	AAAsf	Stable	5.39	2.00	TBD	12/15/30
T-14	AAAsf	Stable	4.35	2.00	TBD	12/15/31
T-15	AAAsf	Stable	162.65	2.00	TBD	12/15/32
T-16	AAAsf	Stable	132.74	2.00	TBD	12/15/33
T-17	AAAsf	Stable	90.72	2.00	TBD	12/15/34
T-18	AAAsf	Stable	99.29	2.00	TBD	12/15/35
T-19	AAAsf	Stable	128.67	2.00	TBD	12/15/36
T-20	AAAsf	Stable	164.40	2.00	TBD	12/15/37
Total			985.30			

Expected ratings do not reflect final ratings and are based on information provided by the issuers as of Oct. 5, 2015. These expected ratings are contingent on final documents conforming to information already received. Ratings are not a recommendation to buy, sell or hold any security. The prospectus, prospectus supplement and other material should be reviewed prior to any purchase. Note: Tranche thickness metrics do not apply to utility tariff transactions. ^aDoes not include true-up mechanism. TBD – To be determined.

Analysts

Asset-Backed Securities

Du Trieu
+1 312 368-2091
du.trieu@fitchratings.com

Melvin Zhou
+1 212 908-0503
melvin.zhou@fitchratings.com

Yun Tian
+1 212 908-0307
yun.tian@fitchratings.com

Public Finance

Dennis Pidherny
+1 212 908-0738
dennis.pidherny@fitchratings.com

Transaction Summary

Fitch Ratings expects to rate the series 2015 restructuring bonds issued by the Utility Debt Securitization Authority (UDSA, or the issuer), as listed on the prior page. The issuer is a special-purpose corporate municipal instrumentality, body corporate and politic, political subdivision, and public benefit corporation of the State of New York. The issuer was created by Part B (the securitization law) of the LIPA Reform Act (the Act), which was passed by the New York State Assembly and Senate on June 21, 2013.

On March 30, 2015 the New York State Assembly and Senate adopted Chapter 58 of the laws of New York, 2015, which amended the securitization law to allow for additional issuances of restructuring bonds, not to exceed \$4.5 billion (inclusive of the \$2.02 billion 2013 restructuring bonds) in aggregate. On May 13, 2015, Chapter 58 was finalized with no challenges filed. Subsequently on June 26, 2015, the financing orders No. 2, 3, and 4 were adopted that authorized the creation of additional restructuring property and the issuance of the series 2015 bonds, which are secured by the additional

restructuring property. On Aug. 14, 2015, the financing orders became irrevocable, final and non-appealable. In aggregate, UDSA has been permitted to issue an amount not to exceed \$2.48 billion in one or more issuances of restructuring bonds (*refer to the Legal Structure and Analysis section on page 9 for further detail related to the legislation*).

The Act, among other things, allows for the retirement of certain outstanding indebtedness of the Long Island Power Authority (the authority) through the issuance of restructuring bonds. The authority is a corporate municipal instrumentality and political subdivision of the State of New York and conducts its business through a wholly owned subsidiary, Long Island Lighting Company (LIPA). The securitization law authorizes the authority to adopt a financing order approving the issuance of the restructuring bonds.

The collateral for the restructuring bonds consists primarily of the 2015 restructuring property, which represents the right to impose, charge and collect through the applicable nonbypassable restructuring charges (RCs) payable by retail electric customers within the service area of LIPA. The transaction will consist of tax-exempt bonds. Series 2015 bonds maturing before June 15, 2026 are not subject to redemption. Conversely, series 2015 bonds with maturities on or after June 15, 2026 are subject to redemption beginning on or after Dec. 15, 2025. Total issuance is expected to be approximately \$985 million.

Key Rating Drivers

Statutory and Regulatory Framework: The strength and stability of the underlying RCs are established by the financing order issued by the authority as part of the Act. The financing order establishes the irrevocable and nonbypassable RCs and defines bondholders' property rights in the 2015 restructuring property. The financing order contains the key elements important in a utility tariff securitization, as discussed in detail on page 20.

Adequate Credit Enhancement via True-Ups: Mandatory annual true-up filings adjust RCs to ensure collections are sufficient to provide all scheduled payments of principal and interest, pay fees and expenses and replenish the debt service (1.50%) and operating reserve (0.50%) subaccounts. Furthermore, semiannual and quarterly true ups may occur if necessary but must meet certain defined parameters.

Supports 'AAAsf' Stresses: Demand shifts in consumption can be caused by various factors, such as the introduction of new technologies, demographic changes or shifting usage patterns, which present greater risk in this transaction relative to others in this asset class, given the longer tenor of the restructuring bonds. Fitch's 'AAAsf' scenario analysis stresses key model variables, such as consumption variance, chargeoff rates and delinquencies, to address this risk. Under Fitch's 'AAAsf' stress assumptions, the aggregate RC for the Series 2013T, Series 2013TE, and Series 2015 transactions is 3.40 (cents/kWh), or 16.32 % of the residential customer bill, which is consistent for 'AAAsf' ratings.

Sound Legal Structure: Fitch reviews all associated legal opinions furnished to analyze the integrity of the legal structure.

Transaction Comparison

	Utility Debt Securitization Authority Restructuring Bonds Series 2015	Utility Debt Securitization Authority Restructuring Bonds Series 2013T and Series 2013TE	State of Hawaii Department of Business, Economic Development, and Tourism Green Energy Market Securitization Bonds 2014 Series A
Closing Date	Oct. 27, 2015 ^a	Dec. 18, 2013	Nov. 13, 2014
Note Balances (\$ Mil.)			
Classes 1-20	985.30	Class T-1 to T-4 (482.93) Class TE-1 to TE-17 (1,539.42)	50.00 100.00
Aggregate Balance	985.30	2,022.35	150.00
Interest Rate (%)^b			
Classes 1-20	5.00	Class T-1 to T-4 (2.86) Class TE-1 to TE-17 (5.00%)	Class A-1 1.467 Class A-2 3.242
Expected Maturity (Years)	20	26	6
Legal Final Maturity (Years)	22	28	15
Initial Tariff Charge (Cents/kWh)	0.4415 ^d	1.26	1.29
Initial Tariff Charge (% of Residential Bill)	2.12 ^e	6.75	0.84
Initial Customer Class Allocation Factors (%)			
Residential	—	—	45
Commercial	—	—	—
Street Lighting	—	—	55% on pro-rata basis between, small, medium, and large commercial and street lighting
Other	—	—	—
Capital Subaccount (%)	2.00 ^f	0.50	0.50
Fitch Ratings			
Classes 1-20	AAAsf (Rating Outlook Stable) ^c	AAAsf (Rating Outlook Stable) ^g	AAAsf (Rating Outlook Stable)

^aSubject to change. ^bPer annum. ^cExpected. ^dEstimated charge provided by LIPA. ^eBased on estimated annual avg. residential bills provided by LIPA. ^fIncludes operating and debt service subaccounts. ^gRatings for classes T1-T4 and TE1-17. NA - Not applicable.

Transaction Parties

Role	Name	Fitch Rating
Issuing Entity	Utility Debt Securitization Authority Series 2015	NR
Issuers	Utility Debt Securitization Authority	NR
Seller	Long Island Power Authority	'A-'; Rating Outlook Negative
Servicer	Long Island Lighting Company	'A-'; Rating Outlook Negative
T&D System Manager	PSEG-LI	'BBB+'; Rating Outlook Stable
Bond Trustee	Bank of New York Mellon	'F1+/AA-'; Rating Outlook Stable
Co-Underwriter	Citi Group Markets Inc.	'F1/A+'; Rating Outlook Stable
Co-Underwriter	Bank of America Merrill Lynch	'F1/A+'; Rating Outlook Stable
Co-Underwriter	Barclays	'F1/A'; Rating Outlook Stable
Co-Underwriter	RBC Capital Markets	'F1+/AA'; Rating Outlook Stable

NR – Not rated.

Credit Analysis

The cash flow supporting the restructuring bonds is generated by payments from retail electric customers in LIPA's service area. Fitch reviewed the customer composition of LIPA's service area to determine the size and usage level of the customer base, customer chargeoffs, regional economic sensitivities and weather-related seasonality. Base case assumptions are derived based on this

review. Fitch then applies various stresses, consistent with its rating criteria, to the base case assumptions. These stressed scenarios are incorporated in cash flow modeling scenarios described in the Cash Flow Analysis section on page 5.

As the U.S. economy continues to experience a slow recovery, any material negative shifts in this process could reverse historical performance trends; the highest absolute variance and chargeoffs were utilized as base assumptions. Consistent with Fitch's 'AAAsf' stress scenario, the base case assumptions were stressed by a 5.0x multiple. Fitch believes the 'AAAsf' stresses account for potential asset deterioration from future weakness in the U.S. economy. See Fitch Research on "Global Economy Faces Multi-speed Recovery, Multiple Risks," dated September 2014, and "Fitch Affirms United States' 'AAA'; Outlook Stable," dated April 2015 (both available on Fitch's website at www.fitchratings.com).

Criteria Application

Fitch's credit and legal analysis, modeling assumptions and cash flow results for the transaction's expected ratings are consistent with its existing utility tariff criteria (*for more information, see Fitch Research on "Rating Criteria for U.S. Utility Tariff Bonds," dated December 2014*).

Data Adequacy

Consumption forecast data provided by LIPA were used in Fitch's analysis. Forecasts are prepared using regression analysis for three major sectors — residential, commercial and other public authorities. The independent variables include electricity usage, weather patterns, demographics, economic performance and co-generation. LIPA provided Fitch with 10 years of forecast data from 2005–2014 for residential, commercial, street lighting and other government customers. In addition, LIPA provided a single aggregate chargeoff data set from 2005–2014.

The consumption forecast and chargeoff data Fitch received from LIPA were deemed adequate, and, thus, no adjustments were applied to Fitch's analysis. Data were provided by the originator and transaction sponsor and reviewed by an internationally recognized accounting firm. The consumption forecast and chargeoff data in the offering memorandum were also reviewed by an internationally recognized accounting firm. The reviewed data were utilized to determine base case variance forecasts and chargeoffs in Fitch's analysis.

Additionally, Fitch relied on detailed stratifications of the collateral pool to ascertain the characteristics of the pool that could impact transaction performance. The data were provided by the originator and transaction sponsor and reviewed by an internationally recognized accounting firm. The stratifications provided in the offering memorandum were also reviewed by an internationally recognized accounting firm. As such, no adjustments were made to Fitch's analysis.

Model

Fitch utilized a proprietary internal cash flow model, which is customized to reflect the payment structure of the transaction and tests the impact of stressing various assumptions, including historical writeoff and consumption-variance patterns. The output of the cash flow model is reviewed to verify that the rated bonds are fully paid under each stress scenario.

Cash Flow Analysis

Fitch integrates the primary asset- and liability-side data presented in the underwriter model into its own internal utility tariff bond cash flow model. The assumptions embedded in the Fitch cash flow model are customized to reflect the terms outlined in the financing order and other transaction documents. Such an approach provides Fitch with a consistent basis for comparison across different utility tariff transactions and the flexibility to layer on additional stress parameters, if any, not already factored in underwriter models. While the cash flow model is taken into consideration in determining the final rating, ratings are ultimately assigned by a Fitch credit committee, which takes into consideration both quantitative and qualitative factors.

Fitch's methodology focuses on applying an absolute variance percentage to collections of the RC cash flows. For the purposes of this transaction, Fitch has applied variance percentages separately to forecast consumption of each customer class. However, the same RC is applied to each customer class, as the financing order does not specify different allocation percentages for the various customer classes. Risk factors include economic recession, demographic shifts, extreme weather changes, increased usage of self-generated energy sources and errors in forecasting. Fitch assumes that the risk of loss of cash flow due to technological changes or other fundamental shifts in consumption will increase materially over time.

The ability of the transaction to withstand significant stresses demonstrates the effectiveness of the true-up mechanism. However, another key consideration is an evaluation of the resulting RC in relation to the total customer bill and other utility tariff securitizations. Fitch believes that if the RC becomes a significant portion of the total bill, the incentive to find ways to bypass the system and avoid the charge increases. Under the base case scenario, RCs charged to residential customers are expected to be stable for the first 15 years but increase over the final five years due to the increase debt service toward the tail end of the transactions life.

Base Case

Fitch's criteria assume that special tariffs (under all scenarios) in excess of 20% of the residential customer's bill over a long financing term would be inconsistent with a 'AAAsf' rating. The initial charge would represent approximately 0.44 (cents/kWh), or 2.12% of the total residential bills. Notably, given the volatility in commodity prices over the past few years, the level of tariff charge as a percentage of a customer's bill may be subject to fluctuation.

The base case cash flow projection utilizes the forecast of electricity consumption from LIPA and assumes that collections and losses are consistent with historical experience. Over the term of the restructuring bonds, the RC charged to customers is expected to remain mostly stable for LIPA customers.

'AAAsf' Stress Case

Fitch's 'AAAsf' stress case stresses several model variables, each of which is meant to incorporate multiple risk factors resulting in a reduction in cash flow below projections. The stress forecast errors for residential, commercial, street lighting and other customers are 26.60%, 18.65%, 31.20% and 68.20%, respectively. The forecast errors represent 5.0x the historical 10-year peak, absolute-value forecast variance for each customer class between 2005 and 2014.

For the residential, commercial, street lighting and other classes, these base errors were applied to the first year and increased 1% annually thereafter for the first 10 years, then by 1.5% for the next five years and 2% thereafter. This resulted in forecast errors in year 20 of 53.10%, 45.15%, 57.70%

and 94.70%, respectively. The stress levels are a proxy for uncertainty associated with event risks and entry of competition, including self-generation and new technology. In applying these variances, Fitch also assumes LIPA's forecast consumption is at base case consumption levels for each customer class for two years before correctly reforecasting for the stressed consumption levels.

To address collection risk and the possible risk of default by LIPA, Fitch also assumed that 100% of billings in the peak one month of consumption in each year are charged off, with no recovery. In addition, the successor servicing fee was modeled at the maximum 0.60% of the initial principal amount of the bonds.

Fitch also applied a multiple of 5.0x to the historical 10-year-peak chargeoffs. LIPA was unable to provide chargeoff data segmented by the four customer classes. Therefore, Fitch's 'AAAsf' chargeoff assumption was based on the peak chargeoff on LIPA's aggregate portfolio. The application of the peak aggregate chargeoff amount is deemed appropriate, as the RC applied to all customers is the same and not based on separately defined allocation factors. This resulted in chargeoffs of 3.80% (0.76% times 5.0x) for each customer class. To model delinquencies, the collection curve is lengthened such that 50% of collections for billed amounts are subject to a 30-day delay for two months, with receipt of remaining collections occurring in month four after the billing date. True-ups were assumed to occur on a semiannual basis.

While the application of 'AAAsf' stress assumptions resulted in fluctuation of RCs throughout the life of the transaction, the overall collections were sufficient to repay the restructuring bonds in full prior to the legal final maturity date. This fluctuation in RCs was the result of the implementation of the true-up mechanism to make up collection shortfalls to ensure required payments were met at the next payment date. Increases in RCs to make up the collection shortfalls resulted in excess collections for some payment periods.

In Fitch's analysis, due to the aforementioned methodology and assumptions, the highest RC amount represented approximately 1.61 (cents/kWh), or 7.71% of the total rate charged to residential customers, which occurs in the last year of the transaction's life. This peak rate exists for 12 months and then declines and never exceeds the peak level.

Additionally, given the fact LIPA's customers will be charged the 2013 RC and 2015 RC, Fitch assessed the impact of the combined tariff charge on the residential customer bill under 'AAAsf' stress scenarios. In this analysis, Fitch aggregated the combined RCs over the tenure of both transactions and compared the peak aggregate RC relative to the total residential customer bill. The peak aggregate RC is 3.40 (cents/kWh), or 16.32% of the customer bill, which is below 20% the 'AAAsf' threshold detailed in Fitch's criteria. The peak aggregate RC lasts only six months and subsequently declines, as this period has the peak debt service requirements on an aggregate basis for both transactions. The peak aggregate RC declines as the aggregate required debt service and amortization schedules are more level throughout the remainder of the transactions life. As the peak 'AAAsf' aggregate RC is below the 20%, there is no negative rating impact on the Series 2013T and Series 2013TE bonds.

Commercial Stress Case

LIPA does not have any industrial customers within its service area but has a large concentration of commercial customers. The commercial customer class represents approximately 49% of total consumption and 44% of total revenue. Typically, Fitch would apply a "no industrial" stress to address concentration risk and risk related to co-generation from large industrial customers. While Fitch does not believe commercial customers pose as much concentration risk as industrial customers, a stressed scenario was incorporated to evaluate the impact on the RC for residential

customers if 50% of the commercial customers were to leave the grid/service territory. This scenario assumed the base case conditions without collections from 50% of the commercial customers.

The elimination of consumption from 50% of the commercial class results in moderately higher RC applied to the residential customers to support the transaction for LIPA. In Fitch's analysis, the highest RC amount represented approximately 1.03 (cents/kWh), or 4.96% of the total rate charged to residential customers. As in the 'AAAsf' stress scenario, implementation of the true-up mechanism led to the restructuring bonds being repaid by the legal final maturity date.

For all scenarios described above, the RC as a percentage of the total rate charged to residential customers was calculated using the estimated annual average residential bills provided by LIPA.

Credit Enhancement

As established in the financing order, the primary source of credit enhancement (CE) is the true-up mechanism. The true-up mechanism requires that the charges are to be reviewed and adjusted annually (annual true-up) to correct for any overcollections or undercollections of charges during the preceding 12 months and to provide for the expected recovery of RCs sufficient to provide all payments of principal and interest and all ongoing financing costs, as well as to replenish the debt service and operating reserve subaccounts in connection with the restructuring bonds.

In addition to the annual true-ups, the financing order allows for true-ups to occur semiannually (midyear review) if the servicer determines that forecasts of RC collections will be insufficient to make all payments of principal and interest and ongoing financing costs during the current or next succeeding payment period.

- To replenish any draws on the debt service and operating reserve subaccounts.
- The annual true-up, to correct any overcollections or undercollections of charges to ensure timely payment of bonds. The semiannual true-up is used to correct for any undercollections, if necessary.
- To pay bonds in full on the scheduled final payment date.

If any bonds are outstanding following the last scheduled maturity date of the bonds or any series, the servicer is also required to make true-up adjustments quarterly to ensure timely payments. Lastly, the financing order permits the servicer to make true-up adjustments more frequently at any time, as necessary, to make all timely payments of interest, principal and ongoing financing costs.

The servicer is responsible for calculating and making the necessary true-up adjustments, in accordance with terms of the servicing agreement. For each adjustment, LIPA will file a notice of adjustment with the authority, which will include a description of the adjustment calculation and the mathematical formulas used for such calculations and the amounts of each variable used in the formulas. Pursuant to the financing order, the authority will review and confirm the accuracy of the true-up calculations.

A debt service and operating reserve subaccounts will be established at closing. The debt service reserve required level is equal to the greater of (a) 1.50% of the aggregate principal amount of the 2015 bonds then outstanding minus the minimum principal amount of the bonds expected to be paid based on the expected amortization schedule or (b) \$0. The required operating reserve level is an amount equal to 0.50% of the initial aggregate principal amount of the bonds. An excess funds subaccount for the issuer will also be established, which will be funded with excess funds, to the extent available, throughout the term of the transaction. True-ups will be calculated to utilize and eliminate any deposits in the excess funds subaccount.

The primary form of CE is the true-up mechanism.

The two reserve subaccounts and excess funds subaccount will be available to fund payment shortfalls. On any payment date, if funds in the general subaccount are insufficient to meet payments of fees, expenses, interest or principal, the trustee will draw first from the excess funds subaccount and then from the two reserve subaccounts.

Transaction and Legal Structure

Interest Allocation

Interest is payable on a semiannual basis on each payment date. Interest will be calculated on a 30/360 day basis.

Principal Allocation

Principal payments on each class of bonds will be made in accordance with an expected amortization schedule to reduce the principal balance to the amount specified in the amortization schedule for that payment date but not below that amount. The bonds will pay principal according to the amortization schedule; however, a portion will pay principal in lump sum bullet payments. The bonds' amortization cannot be paid faster than the expected amortization schedule (except under an early amortization event). Instead, receipts of any excess of the amounts necessary to amortize the bonds, according to the amortization schedule, will be used to fund deficiencies in the reserve subaccounts and allocated to the excess funds account. Amounts in the excess funds account will be taken into consideration in calculating the next true-up adjustment.

Priority of Payments

RCs are applied semiannually, in the following order of priority:

- 1) To the trustee for fees, expenses and indemnity amount not in excess of \$800,000 in each calendar year.
- 2) To the servicer, the servicing fee (0.05% or not in excess of 0.60% of the aggregate initial principal balance each year).
- 3) Current and unpaid administration fees to the administrator.
- 4) Payment of all other ongoing financing costs.
- 5) Interest on the restructuring bonds and past-due interest.
- 6) Any principal then required to be paid on the bonds as a result of acceleration upon an event of default or at final maturity.
- 7) Any principal then scheduled to be paid on the bonds, in accordance with the expected amortization schedule.
- 8) To the trustee for fees, expenses and indemnity in excess of \$800,000 in each calendar year.
- 9) Unpaid servicing fees to the servicer (not in excess of 0.60% of the aggregate initial principal balance each year).
- 10) To replenish any amount drawn from the debt service reserve subaccount.
- 11) To replenish any amount drawn from the operating reserve subaccount.
- 12) The amount, if any, by which the amount in the DSR subaccount exceeds the required DSR level shall be held in the DSR subaccount until the next payment date. The excess will be either used to pay steps 5–7 above prior to any other monies available for such purpose, if required, or will be held in the DSR subaccount until fully applied.

13) The allocation of the remainder, if any, to the excess funds subaccount.

Events of Default

To protect bondholders from issuer insolvency or deterioration in credit quality, the structure includes several events of default, as listed below:

- Failure to pay interest or redemption price when due and continues for five business days.
- Failure to pay principal of any tranche of a bond on the final maturity date of such tranche.
- Failure to perform a covenant.
- A breach of representations or warranties.
- Certain events of bankruptcy, insolvency, receivership or liquidation of the issuer.
- An action in violation of the financing order or the state pledge.

If a bond event of default should occur and is continuing, the trustee or holders may declare all the bonds to be immediately due and payable. All the principal payments on the bonds, together with accrued and unpaid interest thereon, shall become immediately due and payable.

Legal Structure and Analysis

The issuer (UDSA) is a special-purpose corporate municipal instrumentality, body corporate and politic, political subdivision, and public benefit corporation of the State of New York. The issuer was created by Part B (the securitization law) of the Act (codified as Chapter 173, Laws of New York), which was passed by the New York State Assembly and Senate on June 21, 2013. The issuer has no commercial operations. The issuer was formed solely to purchase and own the 2015 restructuring property and to issue the bonds, which are to be secured by the 2015 restructuring property. The issuer is not permitted to engage in any activities, except as specifically authorized under the securitization law. Furthermore, the issuer is not permitted to be a debtor under Chapter 9 or any other provision of the Bankruptcy Code.

The Act, among other things, allows for the retirement of certain outstanding indebtedness of the authority through the issuance of restructuring bonds. The authority is a corporate municipal instrumentality and political subdivision of the State of New York and has a wholly owned subsidiary, LIPA. The securitization law authorizes the authority to adopt a financing order approving the issuance of the restructuring bonds.

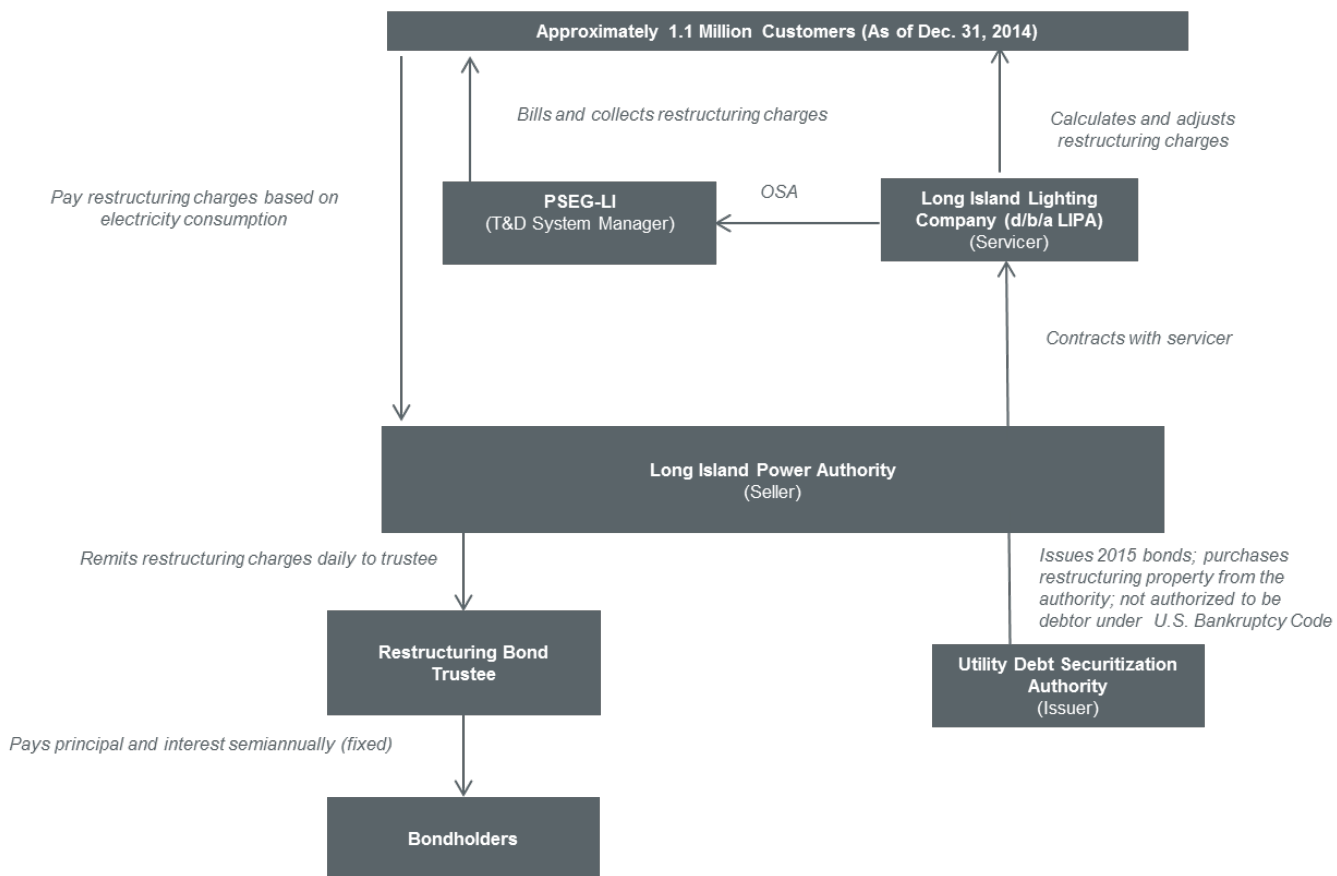
The securitization law was signed by the governor of New York on July 29, 2013 and became non-appealable on Aug. 28, 2013. On March 30, 2015, the New York State Assembly and Senate adopted Chapter 58 of the laws of New York, 2015, which amended the securitization law to allow for additional issuances of restructuring bonds. On April 13, 2015, the governor signed Chapter 58 into law. On May 13, 2015, the time for filing any challenges to the LIPA Reform Act, as amended by such Chapter 58, expired and no such challenges were filed.

Any additional issuance of restructuring bonds will be separately secured by distinct collateral pursuant to a new financing order and transaction documents. On June 26, 2015, the authority trustees adopted financing orders No. 2, No. 3 and No. 4. These financing orders allow the issuer to issue restructuring bonds three times by Dec. 31, 2016. All such financing orders are substantively the same, and each permits the issuer to issue, in one or more issuances, new restructuring bonds in an aggregate amount not to exceed \$2,477,676,000. Each such financing order also authorizes restructuring bonds that will be secured by a separate restructuring charge that would be created pursuant to that financing order.

The issuer will purchase the 2015 restructuring property from the authority. The proceeds from the sale of the restructuring bonds are being issued to purchase, redeem, repay or defease the refunded debt of the authority. The retirement of certain of the authority's outstanding indebtedness is expected to result in savings to customers in LIPA's service area. Collateral for the bonds consists primarily of the 2015 restructuring property, which represents the right to impose, charge and collect through the applicable nonbypassable RCs payable by retail electric customers within LIPA's service area.

As detailed in the financing order No. 2, the issuer and LIPA have entered into a servicing agreement that requires the servicer to perform the billing and collections related to the RCs. LIPA has entered into an operations servicing agreement with Public Service Electric and Gas Co. of Long Island (PSEG-LI), the purpose of which is to provide operating personnel and to oversee the power supply resources necessary to provide electric service to the service area. National Grid is the current transmissions and distribution (T&D) systems manager for LIPA's service area. Since Jan. 1, 2014, PSEG-LI, a wholly owned subsidiary of PSEG, has been responsible for all services related to the T&D system of LIPA. LIPA is responsible for calculating and making the necessary true-up adjustments, in accordance with terms of the servicing agreement.

Summary of Transaction



Disclaimer

For the avoidance of doubt, Fitch relies, in its credit analysis, on legal and/or tax opinions provided by transaction counsel. As Fitch has always made clear, Fitch does not provide legal and/or tax advice or confirm that the legal and/or tax opinions or any other transaction documents or any transaction structures are sufficient for any purpose. The disclaimer at the foot of this report makes it clear that this report does not constitute legal, tax, and/or structuring advice from Fitch and should not be used or interpreted as legal, tax, and/or structuring advice from Fitch. Should readers of this report need legal, tax, and/or structuring advice, they are urged to contact relevant advisers in the relevant jurisdictions.

Asset Analysis

Customer Service Territory

LIPA's service area consists of Nassau and Suffolk counties and the Rockaway Peninsula in Queens, with a population of roughly 3.0 million people; electric service is provided to about 1.1 million customers.

The utility's customer base consists of four customer classes — residential, commercial, street lighting and other public authorities. The largest customer classes by usage (GWh) are the residential and commercial classes, which accounted for approximately 48% and 49% of sales through year-end 2014, respectively. In aggregate, street lighting and other public authorities only represent 3.0% of total sales. Consistent with the methodology detailed in the financing order, the same RC will be charged to all customer classes.

Customer Service Territory

(As of Dec. 31, 2014)

Customer Breakdown	Consumption (GWh)	% of Total Consumption	% of Total Revenue
Residential	9,390	47.7	53.6
Commercial	9,700	49.3	44.1
Public Street and Highway Lighting	156	0.8	0.7
Other Public Authorities	441	2.2	1.6
Total	19,687	100.00	100.00

GWh – Gigawatt hour. Note: Numbers may not add due to rounding.

Collections Experience

Due to the essential nature of electric service, historical writeoff and delinquency rates are generally low. During the past seven years, the number of days on average that customers take to pay invoices as calculated by the average days sales outstanding (DSO) was 35.98 days. The peak DSO experienced was 39.40 days in 2013. Similarly, historical net chargeoffs have also been low dating back to 2005, with an historical high of 0.76% reached in 2009. Net chargeoffs have been relatively stable, despite the outages and decrease in consumption experienced in 2012 due to Hurricane Sandy. In 2012, chargeoffs actually declined to 0.58% from 0.68% in 2011.

Historical Days Sales Outstanding

	12/31/14	12/31/13	12/31/12	12/31/11	12/31/10	12/31/09	12/31/08
Average Days Sales Outstanding	37.13	39.40	39.23	38.55	35.68	32.61	29.26

Net Chargeoff Experience

(\$000)

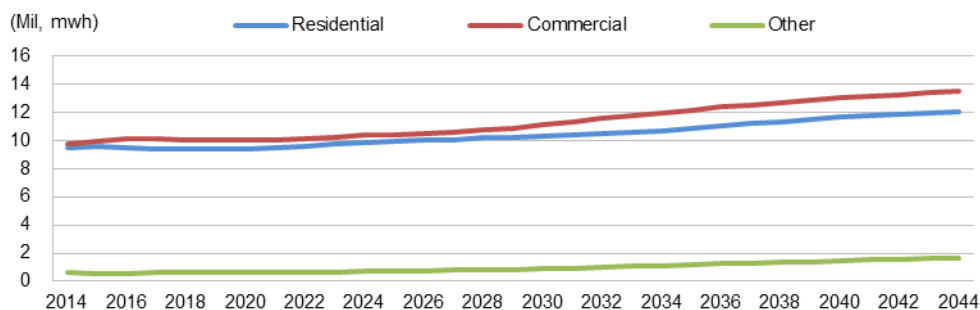
	12/31/14	12/31/13	12/31/12	12/31/11	12/31/10	12/31/09	12/31/08
Billed Electric Revenues	3,753,765	3,834,255	3,413,091	3,620,532	3,853,894	3,522,435	3,683,343
Net Chargeoffs	24,659	20,969	19,750	24,753	24,266	26,753	17,876
As % of Billed Revenue	0.66	0.55	0.58	0.68	0.63	0.76	0.49

Consumption Forecasting

For the next 30 years (tenure of the bonds), LIPA expects average population to remain relatively stable at current levels; the measure is forecast to grow approximately 6.7%. Over the same 30-year period, unemployment is forecast to average approximately 4.5%, and personal income is expected to increase on average 3.8% per year. Single-family housing starts are expected to normalize by 2019.

LIPA monitors the performance of its sales (consumption) forecast and makes midyear corrections as needed. LIPA typically reviews its forecasts in the first quarter of the year and revisits them in the summer as it prepares its forecast for the following year. Similar modifications would be made for the semiannual review and potential true-up of the RC. Forecasts are prepared for three major sectors: residential, commercial, and other public authorities. A separate forecast is prepared for electric vehicle energy consumption, which is then allocated to residential and commercial sales. Since Jan. 1, 2014, PSEG-LI has been responsible for all T&D operations of LIPA, including consumption forecasting. As part of the transition to PSEG-LI, the bulk of National Grid's current staff was retained. As such, the forecasting methodology has remained relatively unchanged.

Consumption Forecast



Source: LIPA.

Securitization History

This issuance of bonds by UDSA is the second issuance of a utility tariff/stranded cost securitization by UDSA and LIPA. The UDSA series 2013T and series 2013TE transaction closed in December 2013 and is performing within Fitch's initial expectations.

Counterparty Risk

Commingling

From the closing date, LIPA (as the named servicer) and PSEG-LI (as the T&D system manager) will be responsible for collecting RCs and transferring these funds to the allocation account. Subsequently, the allocation agent is required to transfer these amounts to the trustee for deposit into the collection account. As of July 2015, LIPA's electric system revenue bonds were rated 'A-', with a Negative Rating Outlook, by Fitch. PSEG-LI is a wholly owned subsidiary of PSEG (rated BBB+/Stable). The transaction documents require that the servicer deposit all collections received from the allocation account into the collection account no later than two business days after receipt of such amounts, which is consistent with Fitch's commingling criteria, given Fitch's ratings on the servicer. The authority will not segregate RCs from other funds it collects from customers or from the general revenue account.

The transaction also includes liquidity in the form of a 1.50% debt service and 0.50% operating reserve subaccounts established by LIPA that provide short-term liquidity. Furthermore, receipt of RCs will generally be processed and remitted electronically to the trust account daily, mitigating concerns related to commingling of trust cash flow with other LIPA cash flows. Additionally, the transaction's waterfall structure provides for interest to be paid while principal amortization shortfalls are covered via the true-up mechanism. The true-up mechanism provides adequate supplementary CE, consistent with Fitch's counterparty criteria.

Performance Analytics

After a rating is assigned by Fitch, the ongoing monitoring of such rating is transitioned to Fitch's performance analytics (PA) team. Fitch's PA team is responsible for collecting and analyzing relevant transaction data and presenting collected information to a rating committee, as described below. Although monitored at each distribution period, each transaction is thoroughly reviewed at least once annually.

Fitch expects to receive periodic servicer reports for its review process. Servicer reports and the performance of the transaction are generally tracked on a semiannual basis but can vary, depending on bond payment frequency. Based on performance data, if bonds are not amortizing as expected or if capital or overcollateralization subaccounts are not at levels required by the transaction's documentation, an analyst from Fitch's PA team will make inquiries with the issuer, possibly triggering an in-depth review. Transaction-specific performance is published on Fitch's surveillance website. Metrics such as bond amortization, true-up amounts, collections and CE levels are tracked and available to investors.

Utilizing the data gathered from the servicer reports and aggregated on Fitch's internal database, the PA analyst evaluates the various performance metrics listed above, as well as microeconomic and macroeconomic issues affecting the issuer. These metrics are compared with initial expectations and industry/sector trends. Fitch will contact the servicer/issuer if additional detail is needed regarding performance changes within the transaction. Additional information requests may include further tariff detail, billing collections and color on consumption variance. Furthermore, Fitch expects to receive data demonstrating the size of the RC relative to the total customer bill to verify that the charge is not approaching threshold levels. In general, Fitch does not employ the use of its cash flow model as part of the review process, as other performance measures (as described above) are sufficient for Fitch's analysis.

The analysis and recommendations are then presented to a rating committee. A rating committee review will result in a rating action — an upgrade, downgrade or affirmation — and a Rating Outlook or Rating Watch being assigned/reviewed. Fitch keeps investors informed about reviews and rating actions through its website at www.fitchratings.com. More information on Fitch's surveillance products is available on Fitch's website.

Rating Actions

All rating actions are determined by committee consensus. The committees are chaired by a Fitch managing director or senior director. Current performance data and Fitch criteria are used to evaluate the transactions and ratings.

Fitch expects its ratings to withstand some level of fluctuation in collateral performance without creating additional rating volatility. If Fitch's review shows that the transaction is not performing as expected, ratings will be placed on Rating Watch to notify investors that there is a reasonable probability of a rating change and to indicate the likely direction of such change. Under Rating Watch, ratings are designated as Positive, indicating a potential upgrade; Negative, for a potential downgrade; or Evolving, if ratings may be raised, lowered or maintained. Rating Watch is typically resolved over a relatively short period.

Rating Sensitivity

Break-the-Bond Case

While Fitch believes that bondholders are protected from the various aforementioned risks based on the 'AAA's' cash flow stress case, the break-the-bond case provides an alternative means by which to measure the potential effects of rapid, significant declines in power consumption while capping the residential RC at 20% of the total residential customers' bill.

In this scenario, the structure is able to withstand a maximum consumption decline of approximately 90.90% in year one. This is the level of forecast energy consumption decline that would cause a default in required payments on bonds or cause the RC to exceed 20% of the total residential customers' bill. Despite this severe decline in consumption, due to the true-up mechanism, RCs are able to pay all debt service by the legal final maturity date.

Origination and Servicing

As detailed in the financing order associated with the UDSA series 2013T and series 2013TE transaction, the issuer and LIPA entered into a servicing agreement that requires the servicer to perform the billing and collections related to the RCs. On Dec. 15, 2011, LIPA executed a 10-year existing operations servicing agreement (existing OSA) with PSEG-LI, which is responsible for providing the management services related to LIPA's T&D system. LIPA re-negotiated the OSA extending the term to 12 years, expiring on Dec. 31, 2025. In conjunction with the OSA, LIPA and PSEG-LI also signed a two-year transition services agreement (TS) that requires PSEG-LI to perform a variety of specified activities related to the transition from National Grid to PSEG-LI as the primary management service provider for LIPA's T&D system, which expired on Dec. 31, 2013.

PSEG-LI assumed full operating responsibilities on Jan. 1, 2014. PSEG-LI is the service provider under the terms of the OSA and is required, among other things, to perform the billing and collections services required of the servicer under the servicing agreement. The financing order No. 2 provides the same provisions related to the servicing agreement.

The OSA contains customary events of defaults, including bankruptcy, payment failures and failure to perform material obligations under the agreement, as well as cure rights. Upon termination or expiration of the OSA, PSEG-LI is only obligated to perform certain back-end transition services and to otherwise assist in the transition to another successor service provider.

Additionally, the Act requires PSEG-LI to prepare and maintain an emergency response plan to ensure the reasonably prompt restoration of service in the case of an emergency event and establish separate responsibilities of the authority and the service provider. Furthermore, PSEG-LI is required to submit for review to the Department of Public Services (DPS) a report detailing PSEG-LI's planned capital expenditures and consider, consistent with maintaining system reliability, renewable generation and energy efficiency program results and options in establishing capital plans.

Furthermore, PSEG-LI is required to submit to the DPS for review data, information and reports on PSEG-LI's actual performance related to the metrics defined in the OSA, including the authority's evaluation thereof, prior to the authority's determination of PSEG-LI's annual incentive compensation. The OSA also includes a long-term objective of providing for rate stability during the first two years (2014–2015) following the close of the UDSA series 2013T and series 2013TE transaction.

On Jan. 30, 2015, a three-year rate plan for the 2016–2018 period was submitted by PSEG-LI to the authority for review by DPS. Following review of the rate plan by DPS, approval is required by the authority's board. The DPS submitted its recommendations to the authority's board on September 2015. After the 2016–2018 period, the authority and PSEG-LI are only required to submit a proposed rate increase for DPS review if it would increase the rates and charges by an amount that would increase the authority's annual revenues by more than 2.5%. In addition, the authority may place rates in effect on an interim basis, and such interim rates are subject to prospective adjustment only.

The transition from National Grid to PSEG-LI began in December 2011 and is largely complete. The primary focus of the transition was on due diligence and analysis with an emphasis on knowledge transfer, transition change implementation and testing. The transition phase included, among other things, the reviews of various aspects, such as evaluation of service facilities, staffing, processes and procedures and software applications. To ensure stability, the majority of high-level associates will be incumbents, and nearly three-quarters of current supervisors are expected to transition from National Grid to PSEG-LI. The PSEG-LI management company is expected to consist of about 20 employees at the director level and higher. PSEG-LI servicing company staff consists of roughly 2,250 employees, which will include a substantial majority of the current National Grid workforce as well as individuals from LIPA.

There was no major relocation of operations on Long Island. Major vendors transitioned "as is," and all customer service offices remained open. Systems and software applications were transitioned to PSEG-LI through lease or ownership. With respect to improvement, the objective was to implement PSEG's strong culture at PSEG-LI while utilizing the best practices of both companies to improve customer satisfaction and operational excellence. To date, PSEG-LI has made measurable progress toward achieving or maintaining the performance metrics set forth in the OSA, made progress in the J.D. Power Residential and Business customer satisfaction surveys, initiated over 40 business process change initiatives, completed a new emergency response plan, and submitted its first annual utility 2.0 long range plan.

LIPA, as named servicer, will be paid a servicing fee of 0.05% of the aggregate initial principal amount of the bonds. The servicing fee will be increased to 0.60% per year of the aggregate

initial principal balance of the bonds if a successor servicer is not affiliated with the owner of the T&D system assets or not performing similar services for the owner of the T&D system assets. Any servicing fee in excess of 0.60% per year must be approved by the authority and the trustee. As servicer, LIPA will also be responsible for monitoring the collateral, calculating the RCs and making the necessary true-up adjustments, in accordance with terms of the servicing agreement. As the T&D systems manager, PSEG-LI will bill and make collections of the RCs. PSEG-LI will be paid an annual management fee detailed in the existing OSA for assuming operating responsibilities of LIPA's T&D system.

The provision of electric service to customers by the authority is governed by the Home Energy Fair Practices Act (HEFPA; Article 2 of the New York Public Service Law). Pursuant to § 11.12 of HEFPA, deposits can be required from residential customers in a number of circumstances, such as for seasonal or short-term service or for customers who have filed for bankruptcy. The deposit can be as much as twice the average monthly bill for a calendar year. The customer may pay the deposit in installments, and the customer earns interest on the deposit for as long as the authority holds that amount. The deposit is automatically returned to the customer if the customer is not delinquent in the payment of bills during the one-year period from the payment of the deposit. For commercial customers, a deposit may be required if the customer's credit quality is deemed high risk for default, as determined by an algorithm developed by National Grid and Dunn & Bradstreet, which was subsequently adopted by PSEG-LI.

LIPA, via PSEG-LI, generates bills in a three-step process: meter reading; bill calculation; and bill printing and mailing. Meters are read on a bimonthly cycle for approximately 979,000 residential and small commercial customers (about 87% of customers). Meters are read on a monthly cycle for roughly 83,000 larger commercial demand-metered customers (roughly 7% of customers) and about 62,000 residential customers with special situations (such as electric space heating [6% of customers]). The majority of the meters are read manually by meter readers, except for roughly 27,230 accounts (2.4% of customers) that are read using hand-held remote sensing (17,654) and remote telecommunications or experimental Smart Meter technologies (9,576).

Once the meter readings are received, bills are calculated and generated and transmitted to a vendor for printing and mailing. The billing cycle differs from the meter reading cycle in that many residential customers who have their meters read bimonthly receive bills on a monthly basis. Approximately 848,000 residential customers receive monthly bills, which, combined with the roughly 83,000 commercial accounts billed monthly, result in 931,000 customers (82% of customers) who receive bills monthly, rather than bimonthly.

Collection practices, including the ability to terminate (disconnect) service, are governed by HEFPA. Bills are due immediately and payable in 20 days to avoid late payment charges and other collection activities. Bill notices and outbound telephone calls may begin as early as 30 days after a bill is issued, if payment is not received. The standard deferred payment agreement requires payment of up to 15% of the bill immediately, and monthly payments of the balance over 10 months, plus the payment of all current charges going forward. Customers that do not make payment of their outstanding arrears or enter into a deferred payment agreement are subject to termination of service (disconnection) for nonpayment. To execute the termination, a field visit is performed to offer a final opportunity to make the payment, evaluate the situation from a safety perspective and, if called for, immediately disconnect the customer.

Long Island Lighting Company (d/b/a LIPA)

LIPA is a New York corporation and a wholly owned subsidiary of the authority. The authority conducts and manages LIPA's business and affairs. The authority and LIPA are parties to a financing agreement providing for their respective duties and obligations relating to the financing and operation of the retail electric business in LIPA's service area.

LIPA is one of the largest municipal electric distribution systems in the U.S., serving an area with a population of about three million people and approximately 1.1 million customers. LIPA operates a virtual monopoly for transmission and distribution services within two of the wealthiest counties in the country, Nassau and Suffolk. On July 29, 2013, the LIPA Reform Act was signed into law, further consolidating the operating functions under a single operator (PSEG-LI) and simplifying operations. PSEG-LI will be the T&D systems manager for all LIPA T&D daily operations.

On Nov. 25, 2015, Fitch affirmed the ratings on LIPA's outstanding electric revenue bonds at 'A-', and the Rating Outlook remains Negative. LIPA's debt rating takes into account the \$2 billion in outstanding securitization bonds issued by the UDSA in December 2013 to retire a portion of LIPA's existing debt. Revenues collected by LIPA to pay debt service on the securitization bonds (a nonbypassable consumption based surcharge) are not subject to the lien of the general or subordinated general resolutions. The current rating and Negative Outlook reflect Fitch's concern over the LIPA Reform Act enacted in 2013, which broadened the operating responsibilities of the new system-operator (PSEG-LI) and expanded the rate regulatory oversight of LIPA. Fitch expects the results of the initial three-year base rate proceeding required in 2015 to be instructive toward future financial goals and policies, as well as prospective rate pressures.

The ratings also reflects solid utility fundamentals, including an improved power supply mix, an affluent well-diversified customer base and approved rate mechanism to stabilize sizable fuel and purchased power related cash flow. These strengths remain unaffected by the recent legislation and restructuring initiatives. The recovery of Hurricane Sandy damage costs has progressed as expected and has not materially compromised LIPA's liquidity. Operating cash balances are adequate but remain low for the rating category. The authority remains considerably levered with \$10.2 billion of debt (including capital leases and securitized bonds) and equity capitalization at just 3.6%. Debt per customer is elevated at \$9,173 for fiscal 2013, compared with the 'A-' peer median of \$3,403. Excluding non-recourse securitization bonds, equity capitalization moderately improves.

PSEG-LI is a wholly owned subsidiary of PSEG (long-term issuer default rating of BBB+/Stable by Fitch). The ratings are based on the predictable operating earnings from the regulated business, the resilient cash flow generation from the merchant operations and the conservative financial strategy. The Stable Outlook reflects Fitch's expectations that credit metrics will remain commensurate with the current ratings, despite a modest weakening as PSEG's subsidiaries workthrough significant capital spending programs in 2015–2017.

Appendix A: Other Aspects

Restructuring Property

2015 restructuring property means all the property, rights and interests, including the irrevocable right to impose, bill and collect RCs, of the authority, established pursuant to the financing order, that are transferred to the issuer pursuant to the sale agreement.

Nonbypassability

RCs are nonbypassable, meaning that customers must pay them, regardless of their electric-generation supplier and whether or not the distribution system is being operated by LIPA or a successor.

Utility Successor

Any successor to LIPA, subject to the financing order, shall perform and satisfy all obligations of LIPA under the financing order.

Irrevocability

The financing order will be irrevocable when final, and the authority may not reduce, impair, postpone or terminate the RC or 2015 restructuring property.

State Pledge

The State of New York pledges to, and agrees with, bondholders, any assignee and any financing parties under the financing order that the state will not take or permit any action that impairs the value of the 2015 restructuring property.

True-Up Adjustment

LIPA, subject to a final financing order, shall file with the authority at least annually or, if determined necessary by the servicer, semiannually or more frequently to ensure that expected collections of RCs are adequate to pay all scheduled payments of principal and interest on the bonds and all ongoing financing costs when due. The RC is based on estimates of consumption for each customer class and other mathematical factors detailed in the financing order. LIPA must file with the authority and issuer approximately 30 days prior to the effective date of the adjustment.

Security Interest

A valid and binding security interest in the restructuring property and other collateral will be created, perfected and enforced to secure the repayment of the principal and interest on the restructuring bonds.

True Sale/Bankruptcy Remote

Any sale, assignment or transfer of the 2015 restructuring property shall be an absolute transfer and true sale of the seller's right, title and interest in, to and under the 2015 restructuring property.

Appendix B: Transaction Overview

Utility Debt Securitization Authority Restructuring Bonds, Series 2015

U.S./ABS

Capital Structure

Class	Expected Ratings	Expected Rating Outlook	Size (%)	Size (\$ Mil.)	CE (%) ^a	Expected Interest Rate (%)	PMT Freq.	Legal Final Maturity	ISIN/CUSIP
T-1	AAAsf	Stable	0.61	6.01	2.00	TBD	Semiannually	6/15/23	TBD
T-2	AAAsf	Stable	0.63	6.25	2.00	TBD	Semiannually	12/15/23	TBD
T-3	AAAsf	Stable	1.04	10.21	2.00	TBD	Semiannually	6/15/24	TBD
T-4	AAAsf	Stable	1.06	10.47	2.00	TBD	Semiannually	12/15/25	TBD
T-5	AAAsf	Stable	0.59	5.78	2.00	TBD	Semiannually	6/15/25	TBD
T-6	AAAsf	Stable	0.60	5.93	2.00	TBD	Semiannually	12/15/25	TBD
T-7	AAAsf	Stable	2.17	21.36	2.00	TBD	Semiannually	6/15/26	TBD
T-8	AAAsf	Stable	2.22	21.89	2.00	TBD	Semiannually	12/15/26	TBD
T-9	AAAsf	Stable	4.91	48.35	2.00	TBD	Semiannually	6/15/27	TBD
T-10	AAAsf	Stable	5.03	49.55	2.00	TBD	Semiannually	12/15/27	TBD
T-11	AAAsf	Stable	0.75	7.43	2.00	TBD	Semiannually	12/15/28	TBD
T-12	AAAsf	Stable	0.40	3.92	2.00	TBD	Semiannually	12/15/29	TBD
T-13	AAAsf	Stable	0.55	5.39	2.00	TBD	Semiannually	12/15/30	TBD
T-14	AAAsf	Stable	0.44	4.34	2.00	TBD	Semiannually	12/15/31	TBD
T-15	AAAsf	Stable	16.51	162.65	2.00	TBD	Semiannually	12/15/32	TBD
T-16	AAAsf	Stable	13.47	132.74	2.00	TBD	Semiannually	12/15/33	TBD
T-17	AAAsf	Stable	9.21	90.72	2.00	TBD	Semiannually	12/15/34	TBD
T-18	AAAsf	Stable	10.08	99.29	2.00	TBD	Semiannually	12/15/35	TBD
T-19	AAAsf	Stable	13.06	128.67	2.00	TBD	Semiannually	12/15/36	TBD
T-20	AAAsf	Stable	16.69	164.40	2.00	TBD	Semiannually	12/15/37	TBD
Total			100.00	985.30					

^aAlso provided via true-up mechanism. CE – Credit enhancement. PMT – Payment. TBD – To be determined.

Credit Enhancement Debt Service Reserve Subaccount: 1.50%; Operating Reserve Subaccount: 0.50%
 True-Up: Unlimited
 Excess Funds Subaccount: Not Funded at Close

Key Information

Details:		Parties:	
Closing Date	Oct. 27, 2015 (Subject to Change)	Issuer	Utility Debt Securitization Authority
Country of Assets and Type	U.S./ABS	Seller/Service	Long Island Power Authority
Country of SPV	U.S.	T&D System Manager	PSEG-LI
Analyst	Du Trieu +1 312 368-2091 Yun Tian +1 212 908-0307	Bond Trustee	Bank of New York Mellon
Performance Analyst	Andrew Tinari +1 312-368-3127	Underwriters	Bank of America, Barclays, Citigroup, RBC Capital Markets

Key Rating Drivers

Statutory and Regulatory Framework: The strength and stability of the underlying RCs are established by the financing order issued by the authority as part of the Act. The financing order establishes the irrevocable and nonbypassable RCs and defines bondholders' property rights in the 2015 restructuring property. The financing order contains the key elements important in a utility tariff securitization, as discussed in detail on page 20.

Adequate Credit Enhancement via True-Ups: Mandatory annual true-up filings adjust RCs to ensure collections are sufficient to provide all scheduled payments of principal and interest, pay fees and expenses and replenish the debt service (1.50%) and operating reserve (0.50%) subaccounts. Furthermore, semiannual and quarterly true ups may occur if necessary but must meet certain defined parameters

Supports 'AAAsf' Stresses: Demand shifts in consumption can be caused by various factors, such as the introduction of new technologies, demographic changes or shifting usage patterns, which present greater risk in this transaction relative to others in this asset class, given the longer tenor of the restructuring bonds. Fitch's 'AAAsf' scenario analysis stresses key model variables, such as consumption variance, chargeoff rates and delinquencies, to address this risk. Under Fitch's 'AAAsf' stress assumptions, the aggregate RCs for the Series 2013T, Series 2013TE, and Series 2015 transactions is 3.40 (cents/kWh), or 16.32 % of the residential customer bill, which is consistent for 'AA' ratings.

Sound Legal Structure: Fitch reviews all associated legal opinions furnished to analyze the integrity of the legal structure.

The ratings above were solicited by, or on behalf of, the issuer, and therefore, Fitch has been compensated for the provision of the ratings.

ALL FITCH CREDIT RATINGS ARE SUBJECT TO CERTAIN LIMITATIONS AND DISCLAIMERS. PLEASE READ THESE LIMITATIONS AND DISCLAIMERS BY FOLLOWING THIS LINK: [HTTPS://FITCHRATINGS.COM/UNDERSTANDINGCREDITRATINGS](https://fitchratings.com/understandingcreditratings) IN ADDITION, RATING DEFINITIONS AND THE TERMS OF USE OF SUCH RATINGS ARE AVAILABLE ON THE AGENCY'S PUBLIC WEB SITE AT WWW.FITCHRATINGS.COM. PUBLISHED RATINGS, CRITERIA, AND METHODOLOGIES ARE AVAILABLE FROM THIS SITE AT ALL TIMES. FITCH'S CODE OF CONDUCT, CONFIDENTIALITY, CONFLICTS OF INTEREST, AFFILIATE FIREWALL, COMPLIANCE, AND OTHER RELEVANT POLICIES AND PROCEDURES ARE ALSO AVAILABLE FROM THE CODE OF CONDUCT SECTION OF THIS SITE. FITCH MAY HAVE PROVIDED ANOTHER PERMISSIBLE SERVICE TO THE RATED ENTITY OR ITS RELATED THIRD PARTIES. DETAILS OF THIS SERVICE FOR RATINGS FOR WHICH THE LEAD ANALYST IS BASED IN AN EU-REGISTERED ENTITY CAN BE FOUND ON THE ENTITY SUMMARY PAGE FOR THIS ISSUER ON THE FITCH WEBSITE.

Copyright © 2015 by Fitch Ratings, Inc., Fitch Ratings Ltd and its subsidiaries. 33 Whitehall Street, NY, NY 10004. Telephone: 1-800-753-4824, (212) 908-0500. Fax: (212) 480-4435. Reproduction or retransmission in whole or in part is prohibited except by permission. All rights reserved. In issuing and maintaining its ratings, Fitch relies on factual information it receives from issuers and underwriters and from other sources Fitch believes to be credible. Fitch conducts a reasonable investigation of the factual information relied upon by it in accordance with its ratings methodology, and obtains reasonable verification of that information from independent sources, to the extent such sources are available for a given security or in a given jurisdiction. The manner of Fitch's factual investigation and the scope of the third-party verification it obtains will vary depending on the nature of the rated security and its issuer, the requirements and practices in the jurisdiction in which the rated security is offered and sold and/or the issuer is located, the availability and nature of relevant public information, access to the management of the issuer and its advisers, the availability of pre-existing third-party verifications such as audit reports, agreed-upon procedures letters, appraisals, actuarial reports, engineering reports, legal opinions and other reports provided by third parties, the availability of independent and competent third-party verification sources with respect to the particular security or in the particular jurisdiction of the issuer, and a variety of other factors. Users of Fitch's ratings should understand that neither an enhanced factual investigation nor any third-party verification can ensure that all of the information Fitch relies on in connection with a rating will be accurate and complete. Ultimately, the issuer and its advisers are responsible for the accuracy of the information they provide to Fitch and to the market in offering documents and other reports. In issuing its ratings Fitch must rely on the work of experts, including independent auditors with respect to financial statements and attorneys with respect to legal and tax matters. Further, ratings are inherently forward-looking and embody assumptions and predictions about future events that by their nature cannot be verified as facts. As a result, despite any verification of current facts, ratings can be affected by future events or conditions that were not anticipated at the time a rating was issued or affirmed.

The information in this report is provided "as is" without any representation or warranty of any kind. A Fitch rating is an opinion as to the creditworthiness of a security. This opinion is based on established criteria and methodologies that Fitch is continuously evaluating and updating. Therefore, ratings are the collective work product of Fitch and no individual, or group of individuals, is solely responsible for a rating. The rating does not address the risk of loss due to risks other than credit risk, unless such risk is specifically mentioned. Fitch is not engaged in the offer or sale of any security. All Fitch reports have shared authorship. Individuals identified in a Fitch report were involved in, but are not solely responsible for, the opinions stated therein. The individuals are named for contact purposes only. A report providing a Fitch rating is neither a prospectus nor a substitute for the information assembled, verified and presented to investors by the issuer and its agents in connection with the sale of the securities. Ratings may be changed or withdrawn at anytime for any reason in the sole discretion of Fitch. Fitch does not provide investment advice of any sort. Ratings are not a recommendation to buy, sell, or hold any security. Ratings do not comment on the adequacy of market price, the suitability of any security for a particular investor, or the tax-exempt nature or taxability of payments made in respect to any security. Fitch receives fees from issuers, insurers, guarantors, other obligors, and underwriters for rating securities. Such fees generally vary from US\$1,000 to US\$750,000 (or the applicable currency equivalent) per issue. In certain cases, Fitch will rate all or a number of issues issued by a particular issuer, or insured or guaranteed by a particular insurer or guarantor, for a single annual fee. Such fees are expected to vary from US\$10,000 to US\$1,500,000 (or the applicable currency equivalent). The assignment, publication, or dissemination of a rating by Fitch shall not constitute a consent by Fitch to use its name as an expert in connection with any registration statement filed under the United States securities laws, the Financial Services and Markets Act of 2000 of the United Kingdom, or the securities laws of any particular jurisdiction. Due to the relative efficiency of electronic publishing and distribution, Fitch research may be available to electronic subscribers up to three days earlier than to print subscribers.

Utility Debt Securitization Authority Restructuring Bonds, Series 2015

Representations and Warranties Presale Appendix

Analysts

Du Trieu
+1 312 368-2091
du.trieu@fitchratings.com

Yun Tian
+1 212 908 0307
yun.tian@fitchratings.com

Melvin Zhou
+1 212 908 0503
melvin.zhou@fitchratings.com

Related Presale Report

[Utility Debt Securitization Authority Restructuring Bonds Series 2015 \(October 2015\)](#)

The representations, warranties and enforcement mechanisms (RW&Es) available to investors that were disclosed in the offering documents for Utility Debt Securitization Authority Restructuring Bonds, Series 2015, and that relate to the underlying asset pool are substantially comparable to those contained in U.S. utility tariff/stranded cost ABS transactions as described in Fitch's special report titled "[Representations, Warranties, and Enforcement Mechanisms in Global Structured Finance Transactions](#)," dated June 15, 2015.

The RW&Es available to investors that were disclosed in the offering documents for Utility Debt Securitization Authority Restructuring Bonds, Series 2015, and that relate to the underlying asset pool are included below.

Seller Representations and Warranties

In the Sale Agreement, the Seller will represent and warrant to the Issuer, as of the Issuance Date, to the effect, among other things, that:

the sale of the 2015 Restructuring Property and the consummation of the transactions contemplated by the Securitization Law and the Sale Agreement and the fulfillment of the terms thereof do not (a) conflict with or result in a breach of any of the terms and provisions of nor constitute (with or without notice or lapse of time) a default under the Seller's organizational documents or any material indenture, agreement or other instrument to which the Seller is a party or by which it is bound, (b) result in the creation or imposition of any lien upon any of the Seller's properties pursuant to the terms of any such indenture, agreement or other instrument (other than any Lien that may be granted under the Basic Documents) or (c) violate any existing law or any existing order, rule or regulation applicable to the Seller of any government authority having jurisdiction over the Seller or its properties,

no portion of the 2015 Restructuring Property has been sold, transferred, assigned or pledged by the Seller to any Person other than the Issuer. Upon the sale, the Seller has transferred, sold and conveyed the 2015 Restructuring Property to the Issuer, free and clear of all Liens, except for any Lien that may be granted under the Basic Documents.

Events of Defaults Related to the Assets

The Indenture provides that each of the following will constitute "Events of Default" thereunder:

default in the observance or performance in any material respect of any covenant or agreement of the Issuer made in the Indenture (other than a covenant or agreement, a default in the observance or performance of which is specifically described elsewhere in this section) or any representation or warranty of the Issuer made in the Indenture or in any certificate or other writing delivered pursuant to the Indenture or in connection therewith proving to have been incorrect in any material respect as of the time when the same shall have been made, and such default shall continue or not be cured or the circumstances or condition in respect of which such misrepresentation or warranty was incorrect shall not have been eliminated or otherwise cured, as the case may be, for a period of 30 days after the earlier of (i) the date that there shall have been given, by registered or certified mail, to the Issuer by the Trustee or to the Issuer and the Trustee by the Holders of at least 25% of the Outstanding Amount of the 2015 Restructuring Bonds, a written notice specifying such default and requiring it to be remedied and stating that such notice is a "Notice of Default" under the Indenture or (ii) the date that the Issuer has actual knowledge of the default,

Remedies Related to Events of Defaults

Remedies—Acceleration

If an Event of Default under the Indenture should occur and be continuing, then and in every such case the Trustee or the Holders representing not less than a majority of the Outstanding Amount of the 2015 Restructuring Bonds may declare all the 2015 Restructuring Bonds to be immediately due and payable, by a notice in writing to the Issuer (and to the Trustee if given by Holders), and upon any such declaration the unpaid principal amount of the 2015 Restructuring Bonds, together with accrued and unpaid interest thereon through the date of acceleration, shall become immediately due and payable.

At any time after such declaration of acceleration of maturity has been made and before a judgment or decree for payment of the money due has been obtained by the Trustee, the Holders representing a majority of the Outstanding Amount of the 2015 Restructuring Bonds, by written notice to the Issuer and the Trustee, may rescind and annul such declaration and its consequences if:

- (i) the Issuer has paid or deposited with the Trustee a sum sufficient to pay (A) all sums paid or advanced by the Trustee thereunder and the reasonable compensation, expenses, disbursements and advances of the Trustee and its agents and counsel and (B) all payments of principal of and interest on all 2015 Restructuring Bonds and all other amounts that would then be due thereunder or upon such 2015 Restructuring Bonds if the Event of Default giving rise to such acceleration had not occurred, and
- (ii) all Events of Default under the Indenture, other than the nonpayment of the principal of the 2015 Restructuring Bonds that has become due solely by such acceleration, have been cured or waived as provided in the Indenture.

No such rescission shall affect any subsequent default or impair any right consequent thereto.

Remedies—Trustee's Rights

If an Event of Default under the Indenture shall have occurred and be continuing, the Trustee may do one or more of the following (subject to the provisions of the Indenture):

- (a) institute Proceedings in its own name and as trustee of an express trust for the collection of all amounts then payable on the 2015 Restructuring Bonds or under the Indenture with respect thereto, whether by declaration of acceleration or otherwise, enforce any judgment obtained, and collect from the Issuer and any other obligor upon such 2015 Restructuring Bonds moneys adjudged due,
- (b) institute Proceedings from time to time for the complete or partial foreclosure of the Indenture with respect to the 2015 Collateral,
- (c) exercise any remedies of a secured party under the Securitization Law or other applicable law and take any other appropriate action to protect and enforce the rights and remedies of the Trustee and the Holders of the 2015 Restructuring Bonds,
- (d) sell the 2015 Collateral or any portion thereof or rights or interest therein, at one or more public or private sales called and conducted in any manner permitted by law, and
- (e) exercise all rights, remedies, powers, privileges and claims of the Issuer against the Servicer under or in connection with, and pursuant to the terms of, the Servicing Agreement;

provided, however, that the Trustee may not sell or otherwise liquidate any portion of the 2015 Collateral following an Event of Default, other than an Event of Default described in clauses (a) and (b) under "Events of Default" above, unless (A) the Holders of 100% of the Outstanding Amount of the 2015 Restructuring Bonds consent thereto, (B) the proceeds of such sale or liquidation distributable to the Holders are sufficient to discharge in full all amounts then due and unpaid upon such 2015 Restructuring Bonds for principal and interest after taking into account payment of all amounts due prior thereto pursuant to the priorities set forth above under "Collection Account and Subaccounts," or (C) the Trustee determines that the 2015 Collateral will not continue to provide sufficient funds for all payments on the 2015 Restructuring Bonds as they would have become due if the 2015 Restructuring Bonds had not been declared immediately due and payable, and the Trustee obtains the written consent of Holders of at least a majority of the Outstanding Amount of the 2015 Restructuring Bonds. In determining such sufficiency or insufficiency with respect to clause (B) or (C), the Trustee may, but need not, obtain and conclusively rely upon an opinion of an Independent investment banking or accounting firm of national reputation as to the feasibility of such proposed action and as to the sufficiency of the 2015 Collateral for such purpose.

If the Trustee collects any money, it shall pay out such money in accordance with the priorities set forth in "SECURITY FOR THE 2015

RESTRUCTURING BONDS — Description of Indenture Accounts."

The rights and remedies conferred upon or reserved to the Trustee or the Bondholders by the Indenture is not exclusive to any right or remedy and is cumulative and in addition to every other right or remedy.

Remedies — Optional Possession of 2015 Collateral

If the 2015 Restructuring Bonds have been declared to be due and payable under the Indenture following an Event of Default and such declaration and its consequences have not been rescinded and annulled, the Trustee may, but need not, elect to maintain possession of the 2015 Collateral. In determining whether to maintain possession of the 2015 Collateral or sell or liquidate the same, the Trustee may, but need not, obtain and conclusively rely upon an opinion of an Independent investment banking or certified public accounting firm of national reputation as to the feasibility of such proposed action and as to the sufficiency of the 2015 Collateral for such purpose.

Remedies — Limitation of the Rights of Holders

No Holder of any Bond shall have any right to institute any Proceeding, judicial or otherwise, with respect to the Indenture, or to avail itself of any remedies provided in the Securitization Law or to utilize or enforce the statutory lien or to avail itself of the right to foreclose on the 2015 Collateral or otherwise enforce the Lien and the security interest on the 2015 Collateral with respect to the Indenture, or for the appointment of a receiver or trustee, or for any other remedy hereunder, unless:

- (a) such Holder previously has given written notice to the Trustee of a continuing Event of Default under the Indenture,
- (b) the Holders of not less than a majority of the Outstanding Amount of the 2015 Restructuring Bonds have made written request to the Trustee to institute such Proceeding in respect of such Event of Default under the Indenture in its own name as Trustee under the Indenture,
- (c) such Holder or Holders have offered to the Trustee indemnity satisfactory to it against the costs, expenses and liabilities to be incurred in complying with such request,
- (d) the Trustee for 60 days after its receipt of such notice, request and offer of indemnity has failed to institute such Proceedings, and
- (e) no direction inconsistent with such written request has been given to the Trustee during such 60-day period by the Holders of at least a majority of the Outstanding Amount of the 2015 Restructuring Bonds;

it being understood and intended that no one or more Holders shall have any right in any manner whatever by virtue of, or by availing of, any provision of the Indenture to affect, disturb or prejudice the rights of any other Holders or to obtain or to seek to obtain priority or preference over any other Holders or to enforce any right under the Indenture, except in the manner therein provided.

In the event the Trustee shall receive conflicting or inconsistent requests and indemnity from two or more groups of Holders, each representing less than a majority of the Outstanding Amount of the 2015 Restructuring Bonds, the Trustee in its sole discretion may determine what action, if any, shall be taken, notwithstanding any other provisions of the Indenture.

Voting of the 2015 Restructuring Bonds; Control of Proceedings by Holders

The Holders of a majority of the Outstanding Amount of the 2015 Restructuring Bonds (or, if less than all tranches are affected, the affected tranche or tranches) have the right to direct the time, method and place of conducting any Proceeding for any remedy available to the Trustee with respect to the 2015 Restructuring Bonds of such tranche or tranches or exercising any trust or power conferred on the Trustee with respect to such tranche or tranches; provided that:

- (a) such direction shall not be in conflict with any rule of law or with the Indenture,

- (b) subject to the express terms of the Indenture, any direction to the Trustee to sell or liquidate any 2015 Collateral shall be by the Holders representing 100% of the Outstanding Amount of the 2015 Restructuring Bonds,
- (c) if the conditions set forth in the Indenture have been satisfied and the Trustee elects to retain the 2015 Collateral, then any direction to the Trustee by Holders representing less than 100% of the Outstanding Amount of the 2015 Restructuring Bonds to sell or liquidate the 2015 Collateral shall be of no force and effect, and
- (d) the Trustee may take any other action deemed proper by the Trustee that is not inconsistent with such direction;

provided, however, that the Trustee's duties shall be subject to the terms of the Indenture, and the Trustee need not take any action that it determines might involve it in liability or might materially adversely affect the rights of any Holders not consenting to such action. Furthermore and without limiting the foregoing, the Trustee shall not be required to take any action for which it reasonably believes that it will not be indemnified to its satisfaction against any cost, expense or liability.

Waiver of Past Defaults

Prior to the declaration of the acceleration of the maturity of the 2015 Restructuring Bonds, Holders representing a majority of the Outstanding Amount of the 2015 Restructuring Bonds (or, if less than all tranches are affected, the Holders of a majority of the 2015 Restructuring Bonds of the affected tranches in the aggregate) may, by written notice to the Trustee, waive any past default or event of default under the Indenture and its consequences, except a default (a) in payment of principal of or interest on any of the 2015 Restructuring Bonds or (b) in respect of a covenant or provision hereof which cannot be modified or amended without the consent of the Holder of each Bond of all tranches affected. In the case of any such waiver, the Issuer, the Trustee and the Holders shall be restored to their former positions and rights hereunder, respectively, but no such waiver shall extend to any subsequent or other default or event of default under the Indenture or impair any right consequent thereto.

Upon any such waiver, such default shall cease to exist and be deemed to have been cured and not to have occurred, and any Event of Default arising therefrom shall be deemed to have been cured and not to have occurred, for every purpose of the Indenture; but no such waiver shall extend to any subsequent or other default or event of default under the Indenture or impair any right consequent thereto.

The ratings above were solicited by, or on behalf of, the issuer, and therefore, Fitch has been compensated for the provision of the ratings.

ALL FITCH CREDIT RATINGS ARE SUBJECT TO CERTAIN LIMITATIONS AND DISCLAIMERS. PLEASE READ THESE LIMITATIONS AND DISCLAIMERS BY FOLLOWING THIS LINK: [HTTPS://FITCHRATINGS.COM/UNDERSTANDINGCREDITRATINGS](https://fitchratings.com/understandingcreditratings) IN ADDITION, RATING DEFINITIONS AND THE TERMS OF USE OF SUCH RATINGS ARE AVAILABLE ON THE AGENCY'S PUBLIC WEB SITE AT WWW.FITCHRATINGS.COM. PUBLISHED RATINGS, CRITERIA, AND METHODOLOGIES ARE AVAILABLE FROM THIS SITE AT ALL TIMES. FITCH'S CODE OF CONDUCT, CONFIDENTIALITY, CONFLICTS OF INTEREST, AFFILIATE FIREWALL, COMPLIANCE, AND OTHER RELEVANT POLICIES AND PROCEDURES ARE ALSO AVAILABLE FROM THE CODE OF CONDUCT SECTION OF THIS SITE. FITCH MAY HAVE PROVIDED ANOTHER PERMISSIBLE SERVICE TO THE RATED ENTITY OR ITS RELATED THIRD PARTIES. DETAILS OF THIS SERVICE FOR RATINGS FOR WHICH THE LEAD ANALYST IS BASED IN AN EU-REGISTERED ENTITY CAN BE FOUND ON THE ENTITY SUMMARY PAGE FOR THIS ISSUER ON THE FITCH WEBSITE.

Copyright © 2015 by Fitch Ratings, Inc., Fitch Ratings Ltd. and its subsidiaries. 33 Whitehall Street, NY, NY 10004. Telephone: 1-800-753-4824, (212) 908-0500. Fax: (212) 480-4435. Reproduction or retransmission in whole or in part is prohibited except by permission. All rights reserved. In issuing and maintaining its ratings, Fitch relies on factual information it receives from issuers and underwriters and from other sources Fitch believes to be credible. Fitch conducts a reasonable investigation of the factual information relied upon by it in accordance with its ratings methodology, and obtains reasonable verification of that information from independent sources, to the extent such sources are available for a given security or in a given jurisdiction. The manner of Fitch's factual investigation and the scope of the third-party verification it obtains will vary depending on the nature of the rated security and its issuer, the requirements and practices in the jurisdiction in which the rated security is offered and sold and/or the issuer is located, the availability and nature of relevant public information, access to the management of the issuer and its advisers, the availability of pre-existing third-party verifications such as audit reports, agreed-upon procedures letters, appraisals, actuarial reports, engineering reports, legal opinions and other reports provided by third parties, the availability of independent and competent third-party verification sources with respect to the particular security or in the particular jurisdiction of the issuer, and a variety of other factors. Users of Fitch's ratings should understand that neither an enhanced factual investigation nor any third-party verification can ensure that all of the information Fitch relies on in connection with a rating will be accurate and complete. Ultimately, the issuer and its advisers are responsible for the accuracy of the information they provide to Fitch and to the market in offering documents and other reports. In issuing its ratings Fitch must rely on the work of experts, including independent auditors with respect to financial statements and attorneys with respect to legal and tax matters. Further, ratings are inherently forward-looking and embody assumptions and predictions about future events that by their nature cannot be verified as facts. As a result, despite any verification of current facts, ratings can be affected by future events or conditions that were not anticipated at the time a rating was issued or affirmed.

The information in this report is provided "as is" without any representation or warranty of any kind. A Fitch rating is an opinion as to the creditworthiness of a security. This opinion is based on established criteria and methodologies that Fitch is continuously evaluating and updating. Therefore, ratings are the collective work product of Fitch and no individual, or group of individuals, is solely responsible for a rating. The rating does not address the risk of loss due to risks other than credit risk, unless such risk is specifically mentioned. Fitch is not engaged in the offer or sale of any security. All Fitch reports have shared authorship. Individuals identified in a Fitch report were involved in, but are not solely responsible for, the opinions stated therein. The individuals are named for contact purposes only. A report providing a Fitch rating is neither a prospectus nor a substitute for the information assembled, verified and presented to investors by the issuer and its agents in connection with the sale of the securities. Ratings may be changed or withdrawn at anytime for any reason in the sole discretion of Fitch. Fitch does not provide investment advice of any sort. Ratings are not a recommendation to buy, sell, or hold any security. Ratings do not comment on the adequacy of market price, the suitability of any security for a particular investor, or the tax-exempt nature or taxability of payments made in respect to any security. Fitch receives fees from issuers, insurers, guarantors, other obligors, and underwriters for rating securities. Such fees generally vary from US\$1,000 to US\$750,000 (or the applicable currency equivalent) per issue. In certain cases, Fitch will rate all or a number of issues issued by a particular issuer, or insured or guaranteed by a particular insurer or guarantor, for a single annual fee. Such fees are expected to vary from US\$10,000 to US\$1,500,000 (or the applicable currency equivalent). The assignment, publication, or dissemination of a rating by Fitch shall not constitute a consent by Fitch to use its name as an expert in connection with any registration statement filed under the United States securities laws, the Financial Services and Markets Act of 2000 of the United Kingdom, or the securities laws of any particular jurisdiction. Due to the relative efficiency of electronic publishing and distribution, Fitch research may be available to electronic subscribers up to three days earlier than to print subscribers.